

PCIAW-LED SERIES

Lensed LED Linear Wrap

Specifications:

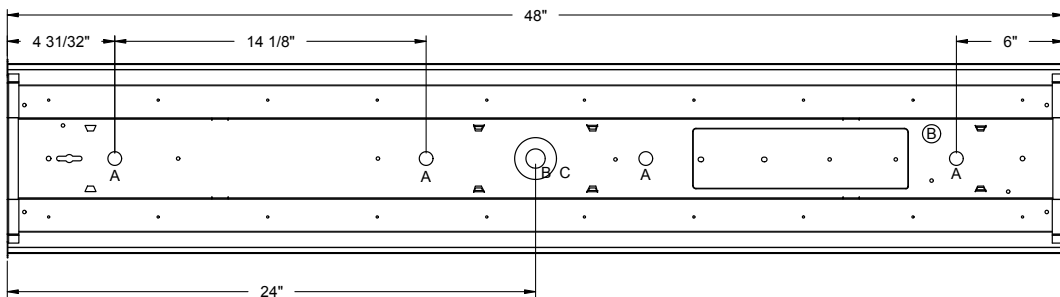
Features:

- Long life 50,000 hour LED's
- Heavy gauge steel housing
- Frosted acrylic lens
- 3500K and 4000K Color Temperature
- 0-10V Dimming Standard
- Universal input voltage 120-277 VAC, 50/60Hz
- Fully assembled for quick installation
- DesignLights Consortium (DLC) qualified; see designlights.org

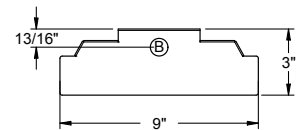
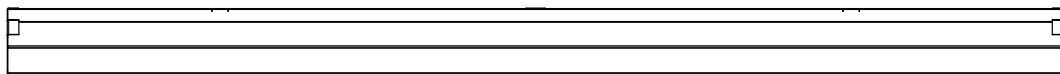
Compliances:

PCIAW Series are built to UL 1598 standards and UL listed. Damp location labeling is standard. DesignLights Consortium® (DLC) qualified. Please refer to the DLC website for specific product qualifications at www.designlights.org.

Dimensions:



A - 1/2" Diameter Knockout
 B - 7/8" Diameter Knockout
 C - 2" Diameter Knockout



Warranty:

5 year limited warranty (Terms and Conditions apply).

Catalog Number:

EXAMPLE: PCIAW-LED-2-35K

PCIAW	LED	2	35K
SERIES	LAMP TYPE	LAMP SIZE	COLOR TEMPERATURE
PCIAW	LED	2 2' 2000 Lumens 4 4' 4000 Lumens	35K 3500K 40K 4000K

PCIAW-LED SERIES

Lensed LED Linear Wrap

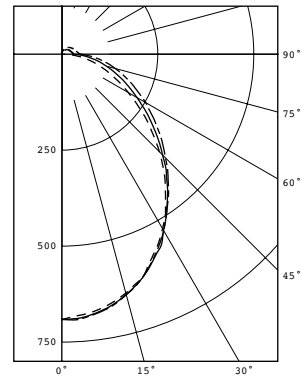
Photometrics:

ELECTRICAL DATA	PCIAW-LED-2-35K
Input Voltage	Universal 120V-277 V
Input Frequency	50/60 Hz
Input Current	0.153 A
Input Power	17.8
Power Factor	0.912
THD	<20%
EMI Filtering	FCC Title 47, Part 15 Class B
Operating Temperature	-10 °C to 30 °C
Dimming	Yes*
Over-voltage, over-current, short-circuit protected	
*See Dimming Notes for more information	

PCIAW-LED-2-35K
LED Light Engine: 3500 K 80 CRI CRI
System Wattage: 17.8
Fixture delivered lumens: 1833
Fixture Efficacy: 103
Spacing Criteria: 1.15

CANDELA DISTRIBUTION						
CANDELA	DISTRIBUTION					FLUX
0.0	22.5	45.0	67.5	90.0		
0	691	691	691	691	691	691
5	680	685	687	688	689	65
15	644	649	648	650	649	183
25	570	574	578	577	576	265
35	471	477	478	483	480	299
45	360	366	371	384	382	288
55	249	258	272	286	292	243
65	158	169	187	205	212	186
75	90	102	120	138	144	126
85	30	44	62	77	82	65
90	0	15	33	46	50	
95	0	13	29	40	42	28
105	1	11	25	34	37	24
115	1	11	23	30	33	20
125	2	10	20	27	29	16
135	2	8	17	23	25	12
145	2	7	13	18	19	8
155	3	5	9	12	14	4
165	3	4	6	7	8	2
175	3	3	4	4	4	0
180	3	3	3	3	3	

ZONAL LUMEN SUMMARY		
ZONE	LUMENS	%FIXT
0-30	513	28.0
0-40	812	44.3
0-60	1343	73.3
0-90	1719	93.8
90-120	72	3.9
90-130	88	4.8
90-150	108	5.9
90-180	114	6.2
0-180	1833	100.0

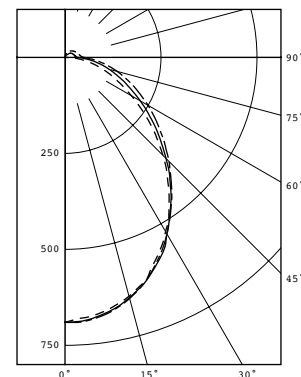


ELECTRICAL DATA	PCIAW-LED-2-40K
Input Voltage	Universal 120V-277 V
Input Frequency	50/60 Hz
Input Current	0.149 A
Input Power	17.6
Power Factor	0.909
THD	<20%
EMI Filtering	FCC Title 47, Part 15 Class B
Operating Temperature	-10 °C to 30 °C
Dimming	Yes*
Over-voltage, over-current, short-circuit protected	
*See Dimming Notes for more information	

PCIAW-LED-2-40K
LED Light Engine: 4000 K 80 CRI CRI
System Wattage: 17.6
Fixture delivered lumens: 1826
Fixture Efficacy: 104
Spacing Criteria: 1.15

CANDELA DISTRIBUTION						
CANDELA	DISTRIBUTION					FLUX
0.0	22.5	45.0	67.5	90.0		
0	690	690	690	690	690	690
5	679	684	686	688	688	65
15	644	648	648	650	650	183
25	570	575	581	577	577	265
35	472	479	479	483	481	300
45	361	365	372	382	383	288
55	250	258	271	286	291	243
65	157	169	185	202	210	184
75	88	100	119	135	141	124
85	30	43	60	75	78	63
90	1	15	34	47	50	
95	0	12	28	39	41	28
105	1	11	25	33	36	23
115	1	10	22	29	32	19
125	2	9	19	26	28	16
135	2	8	16	22	24	11
145	3	7	12	17	19	7
155	3	5	9	12	14	4
165	3	4	6	8	8	2
175	3	3	4	4	4	0
180	3	3	3	3	3	

ZONAL LUMEN SUMMARY		
ZONE	LUMENS	%FIXT
0-30	513	28.1
0-40	813	44.5
0-60	1343	73.6
0-90	1715	93.9
90-120	70	3.9
90-130	86	4.7
90-150	105	5.7
90-180	111	6.1
0-180	1826	100.0



PCIAW-LED SERIES

Lensed LED Linear Wrap

ELECTRICAL DATA

PCIAW-LED-4-35K

Input Voltage	Universal 120V-277 V
Input Frequency	50/60 Hz
Input Current	0.327 A
Input Power	39
Power Factor	0.95
THD	<20%
EMI Filtering	FCC Title 47, Part 15 Class B
Operating Temperature	-10 °C to 30 °C
Dimming	Yes*
Over-voltage, over-current, short-circuit protected	
*See Dimming Notes for more information	

PCIAW-LED-4-35K

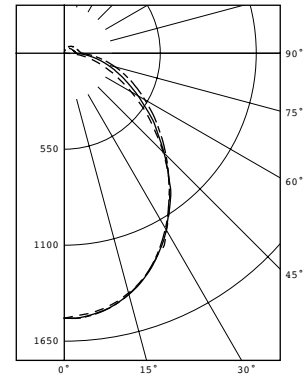
LED Light Engine: 3500 K 80 CRI CRI
System Wattage: 39
Fixture delivered lumens: 4006
Fixture Efficacy: 103
Spacing Criteria: 1.15

CANDELA DISTRIBUTION

CANDELA	DISTRIBUTION					FLUX
0.0	22.5	45.0	67.5	90.0		
0	1518	1518	1518	1518	1518	1518
5	1499	1506	1511	1509	1514	143
15	1422	1429	1430	1427	1430	402
25	1270	1275	1271	1263	1265	584
35	1053	1057	1056	1045	1044	658
45	801	813	809	819	823	627
55	556	569	588	614	626	528
65	344	367	400	436	451	399
75	191	215	257	291	302	268
85	66	93	130	159	166	136
90	5	33	70	97	103	
95	5	30	63	85	90	62
105	6	27	55	73	78	53
115	8	26	50	66	70	45
125	9	25	45	59	64	37
135	11	22	39	52	56	28
145	12	20	32	43	46	19
155	14	17	24	32	34	11
165	14	14	17	21	23	5
175	14	12	12	12	12	1
180	12	12	12	12	12	

ZONAL LUMEN SUMMARY

ZONE	LUMENS	%FIXT
0-30	1129	28.2
0-40	1787	44.6
0-60	2942	73.4
0-90	3744	93.5
90-120	160	4.0
90-130	197	4.9
90-150	245	6.1
90-180	262	6.5
0-180	4006	100.0



ELECTRICAL DATA

PCIAW-LED-4-40K

Input Voltage	Universal 120V-277 V
Input Frequency	50/60 Hz
Input Current	0.321 A
Input Power	38.3
Power Factor	0.95
THD	<20%
EMI Filtering	FCC Title 47, Part 15 Class B
Operating Temperature	-10 °C to 30 °C
Dimming	Yes*
Over-voltage, over-current, short-circuit protected	
*See Dimming Notes for more information	

PCIAW-LED-4-40K

LED Light Engine: 4000 K 80 CRI CRI
System Wattage: 38.3
Fixture delivered lumens: 3980
Fixture Efficacy: 104
Spacing Criteria: 1.16

CANDELA DISTRIBUTION

CANDELA	DISTRIBUTION					FLUX
0.0	22.5	45.0	67.5	90.0		
0	1494	1494	1494	1494	1494	1494
5	1476	1482	1487	1485	1490	141
15	1401	1406	1409	1406	1409	396
25	1253	1258	1257	1251	1253	577
35	1046	1049	1047	1041	1040	653
45	804	810	811	818	820	627
55	564	576	591	609	622	531
65	356	375	403	434	447	402
75	197	220	258	291	303	270
85	67	92	129	159	170	136
90	4	33	68	96	103	
95	4	28	59	82	89	60
105	6	26	53	71	76	51
115	7	25	47	63	68	43
125	8	23	42	56	61	35
135	9	20	37	49	52	26
145	11	18	30	40	43	18
155	12	15	22	29	32	10
165	12	12	15	19	20	4
175	13	10	10	10	10	1
180	10	10	10	10	10	

ZONAL LUMEN SUMMARY

ZONE	LUMENS	%FIXT
0-30	1114	28.0
0-40	1767	44.4
0-60	2925	73.5
0-90	3731	93.8
90-120	153	3.8
90-130	188	4.7
90-150	233	5.8
90-180	248	6.2
0-180	3980	100.0

